

Battery Maintenance

Should be done EVERY 2 Years

Battery Box Located Outside on S.S. Enclosure and Inside Enclosure Poly Fiber



Note Indicator Light Location



Power Off The N-300 w/Toggle Switch



Remove the Four Screws That Hold The Cover on.



Disconnect The Battery Cable From The Charger Module



Inspect All Connections for Corrosion and Good Connections



If Any Corrosion is Found, All
Corroded Components Must Be
Replaced





Remove all (8) Screws that Secure the Batteries in the Enclosure



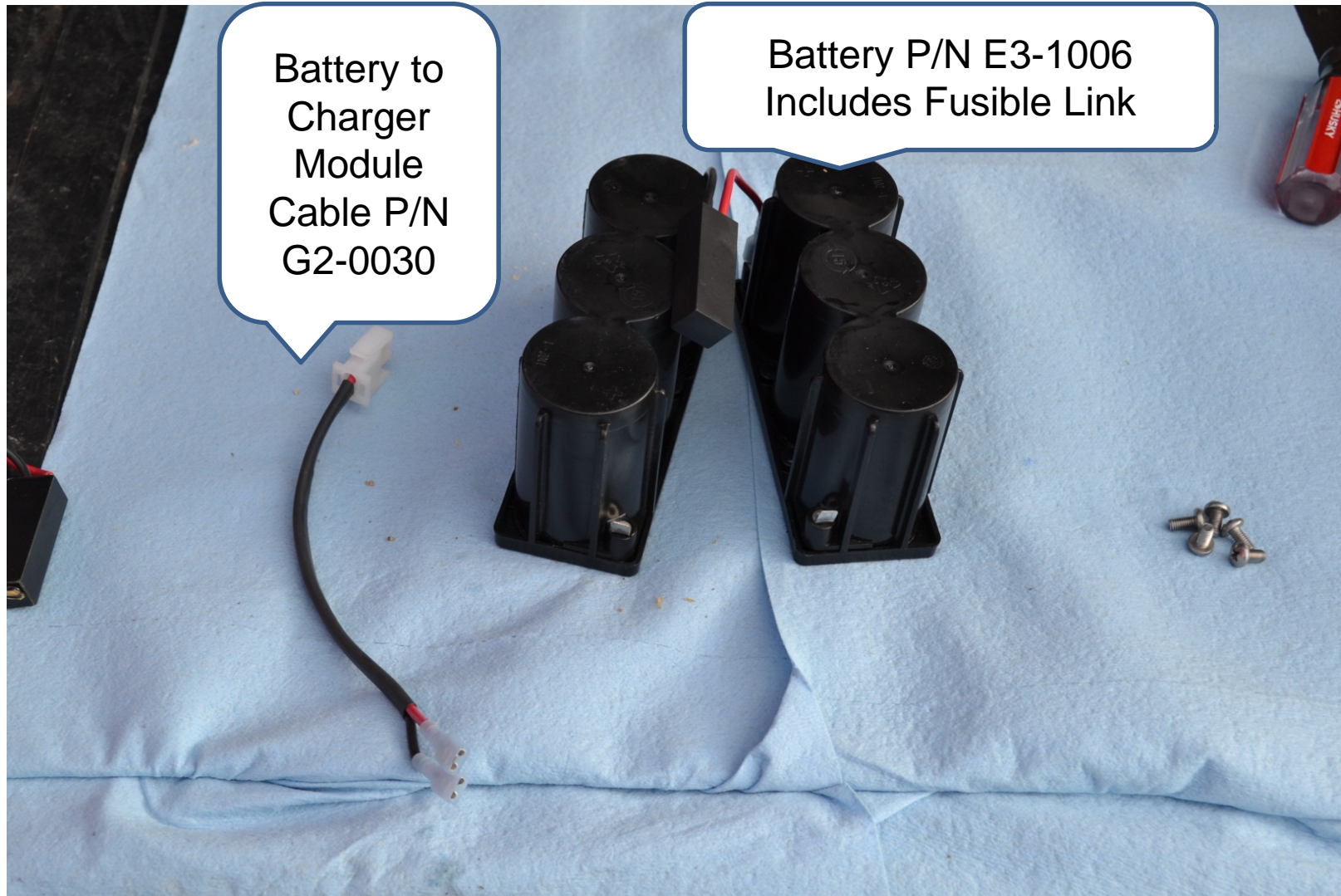
Remove Both Sets of Cells Together



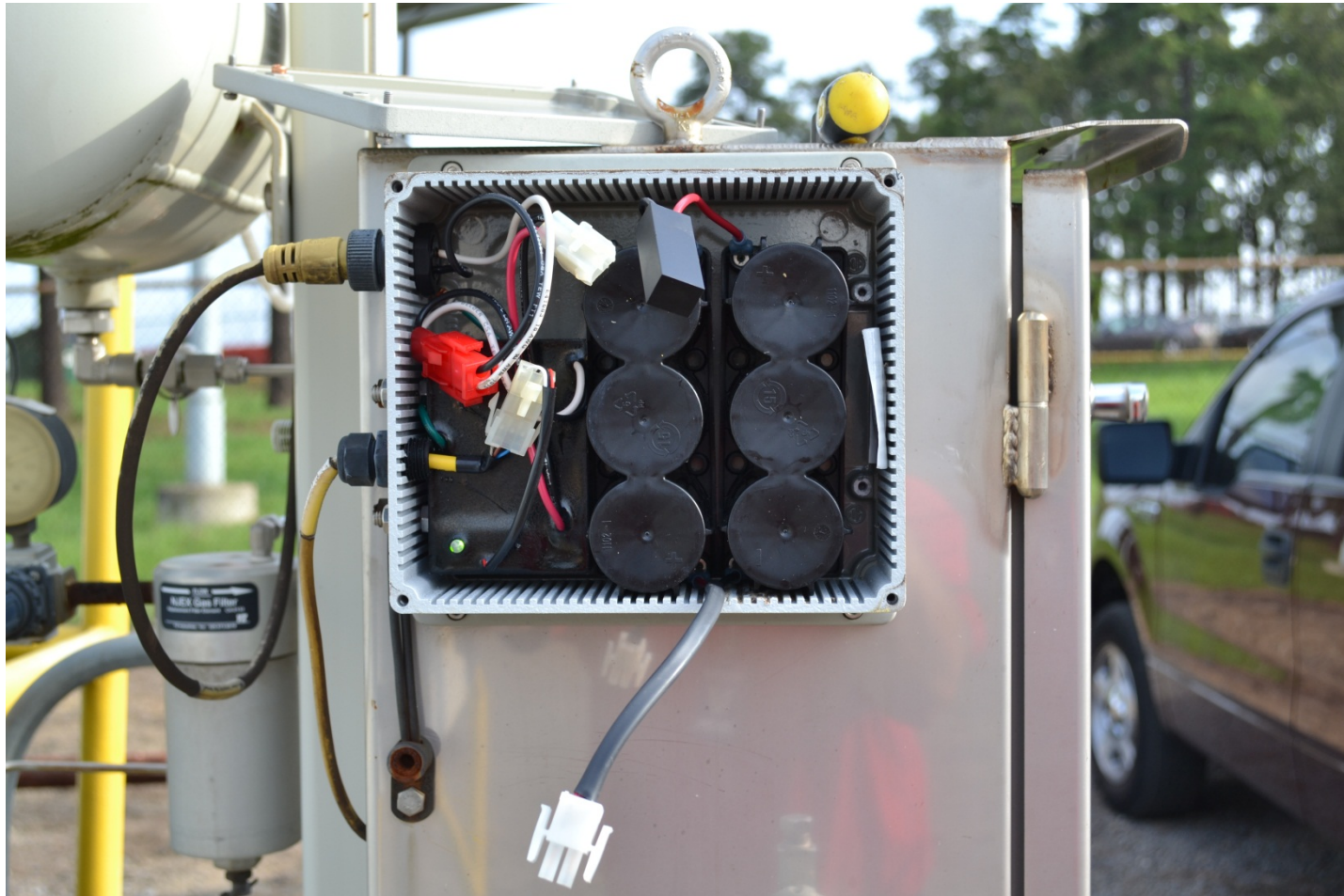




Prepare new Components, Attach Cable Assy. To Battery Terminals (red +, black -)



Place Battery Assembly Into The Battery Enclosure



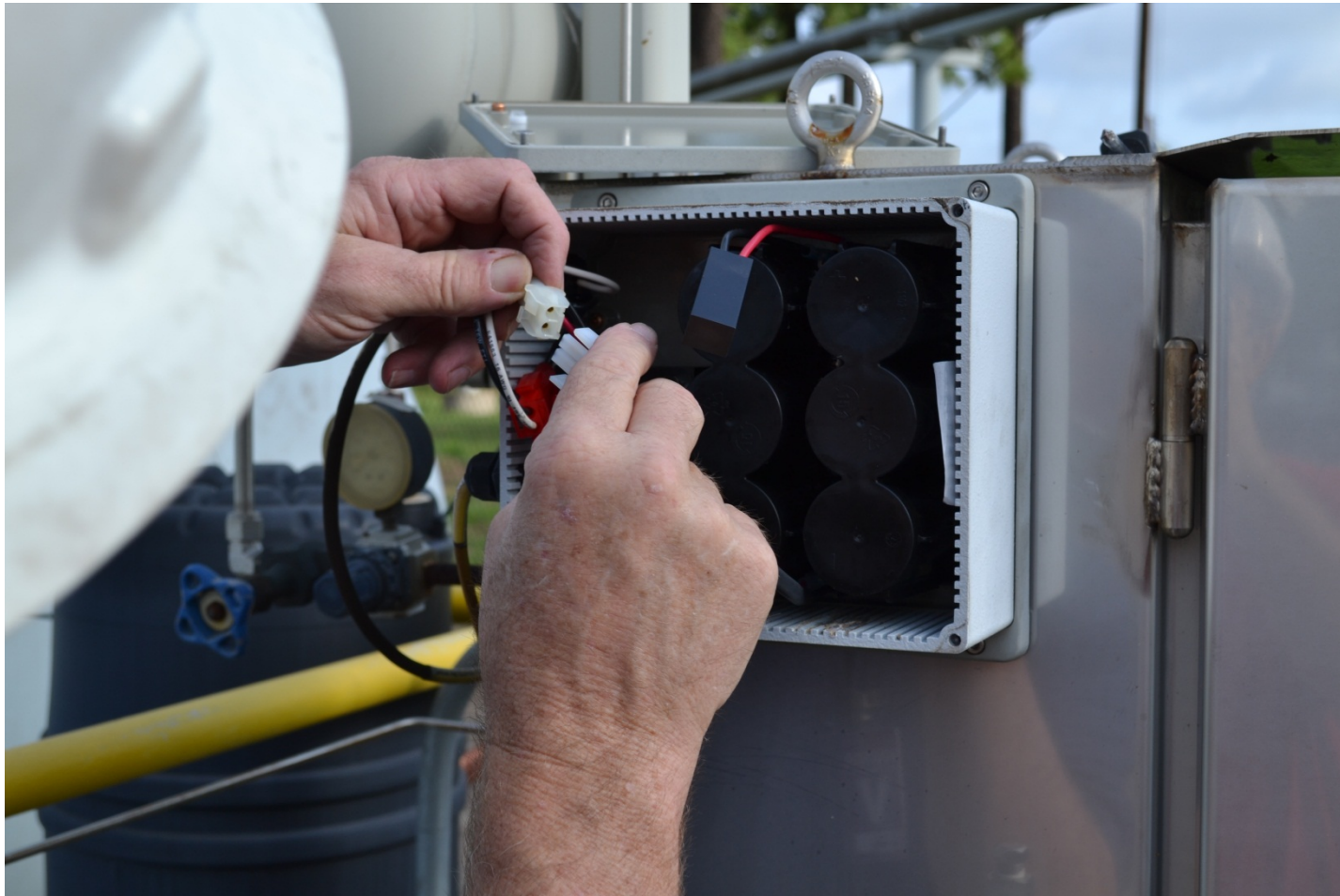
Reinstall ALL (8) Screws That Secure The Battery



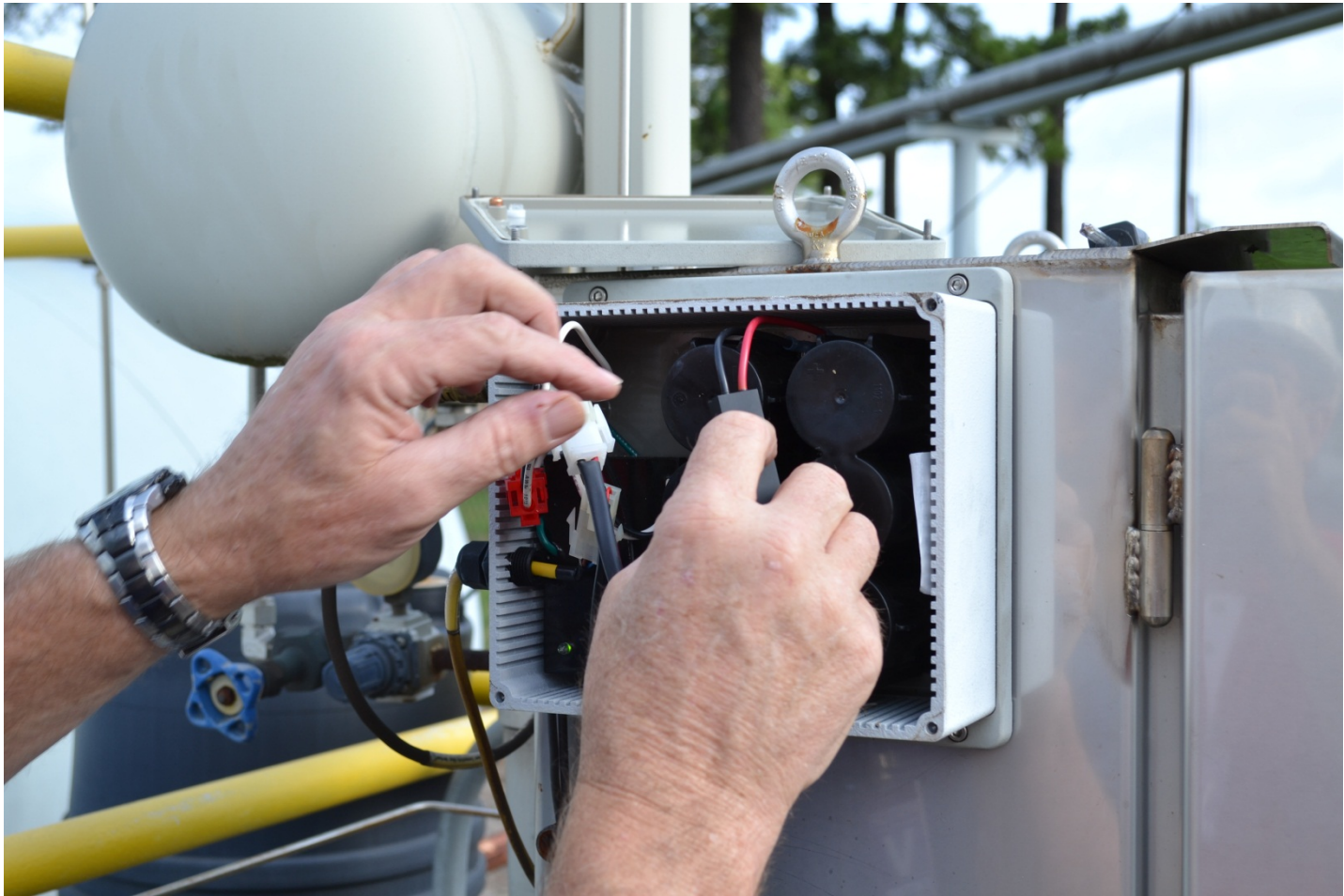
The Battery Fusible Link Must Be Connected to The Battery Terminals on One Side of The Battery



Connect the Battery Charger Module to The Battery Cable attached to The Other Side of the Battery



Push The Battery Fusible Link
Connected to The Battery into the Void
Around The Battery Cells



Re-Install Battery Cover Making
Sure the Charge Indicator Lens is
Aligned with The Indicator Lamp.



Power On The N-300 w/Toggle Switch

