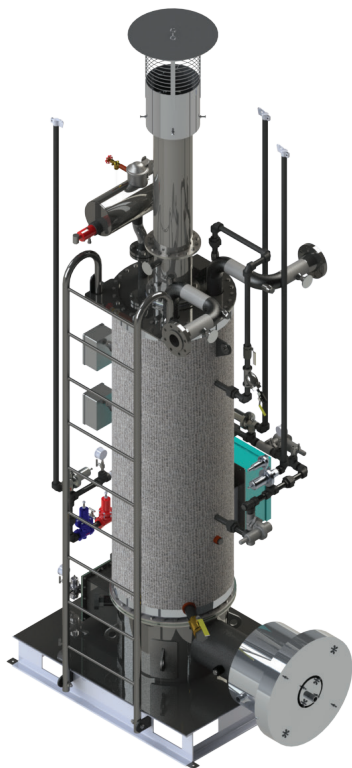


Vertical Indirect Fired Water Bath Heaters are an aesthetically and environmentally safe addition to TERI's popular Horizontal Glycol-Water Bath Heaters.



Features include:

- Higher Thermal Efficiency (75%-85%).
- Small foot print package.
- Quiet environment.
- Aesthetics of equipment enclosures that will represent the look of the area (*optional*).
- Instruments are typically pneumatic.
- Forklift pockets and lifting lugs for ease of installation
- Stack is not required to be as tall as on horizontal style heaters.

Typical uses include:

- Heating natural gas prior to pressure reduction to eliminate frost formation downstream of regulation.
- Preventing hydrate formation in well stream fluids.
- Heating well stream fluids prior to phase separation.

COMPONENTS

The complete system consists of the following components, each designed to meet specific design criteria.

THE PROCESS COIL is the pressure containing part designed in accordance with API 12 K or ASME Section VIII Division 1 code requirements.

THE FIRETUBE is designed to efficiently transfer heat into the surrounding heat media. The burner is very quiet.

THE HEATER SHELL is an atmospheric vessel designed in accordance with API 12 K requirements. No vacuum system.

THE HEAT MEDIA is commonly a mixture of glycol and water which is blended to a consistency to provide for proper freeze protection. Media requires rust inhibitor.

ACCESSORIES TERI designs and manufactures natural gas heater systems with a wide variety of accessories to meet customer specified mechanical pneumatic controls to sophisticated remote controlled and monitored equipment.

TERI Vertical Heaters are a MARK of EXCELLENCE

Standard Sizes

100,000 BTU/Hour	(3'x4' Base x 6'4" Tall)
200,000 BTU/Hour	(4'x5' Base x 7'6" Tall)
300,000 BTU/Hour	(4'x5' Base x 8'8" Tall)
400,000 BTU/Hour	(4'x5' Base x 9'10" Tall)
500,000 BTU/Hour	(5'x6' Base x 11' Tall)

Dimensions shown do not include 4'0" stack height.



Now Featuring
24/7 Tech Support

918-246-1600

fax: 918-246-1699 | sales@ogipe.com

8939 West 21st Street | Sand Springs, OK 74063

**ENGINEERED FIRED EQUIPMENT
FOR THE ENERGY INDUSTRY**



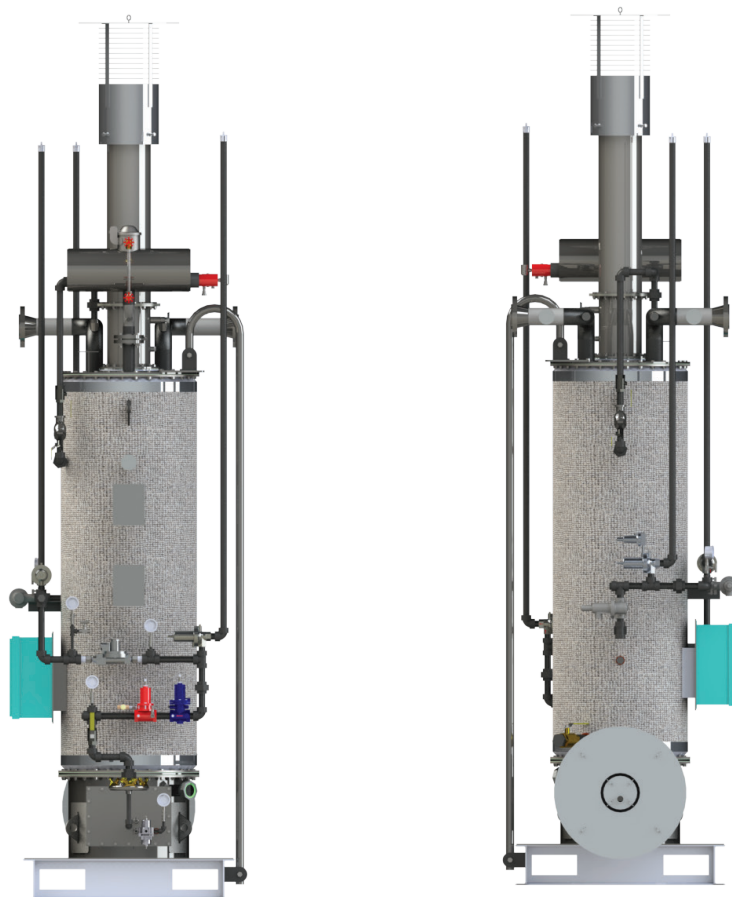
PROCESS EQUIPMENT, INC.

QuikWater is a brand of OGI Process Equipment, Inc.
www.ogipe.com



We listened to our customers! Total Energy Resources, Inc. has Engineered and Manufactured thousands of high quality Indirect Water Bath Heaters for the Natural Gas Industry. Your request, combined with our proven experience and high quality customer service has prompted us to add the **TERI VERTICAL HEATER**. This new design can go in an area where the noise or appearance of a standard horizontal heater may face opposition from local residents.

- More Aesthetically Pleasing
- Very Quiet Burner Assembly
- Small Package Foot Print
- Fully Enclosed controls
- Not under a vacuum system



Now Featuring
24/7 Tech Support

918-246-1600
fax: 918-246-1699 | sales@ogipe.com
8939 West 21st Street | Sand Springs, OK 74063

ENGINEERED FIRED EQUIPMENT
FOR THE ENERGY INDUSTRY



PROCESS EQUIPMENT, INC.

QuikWater is a brand of OGI Process Equipment, Inc.
www.ogipe.com

